

# MONTHLY MEMBERSHIP PROGRESS REPORT

LOCATION AUSTRALIA

District 201V6

Results as of: 4/30/2023

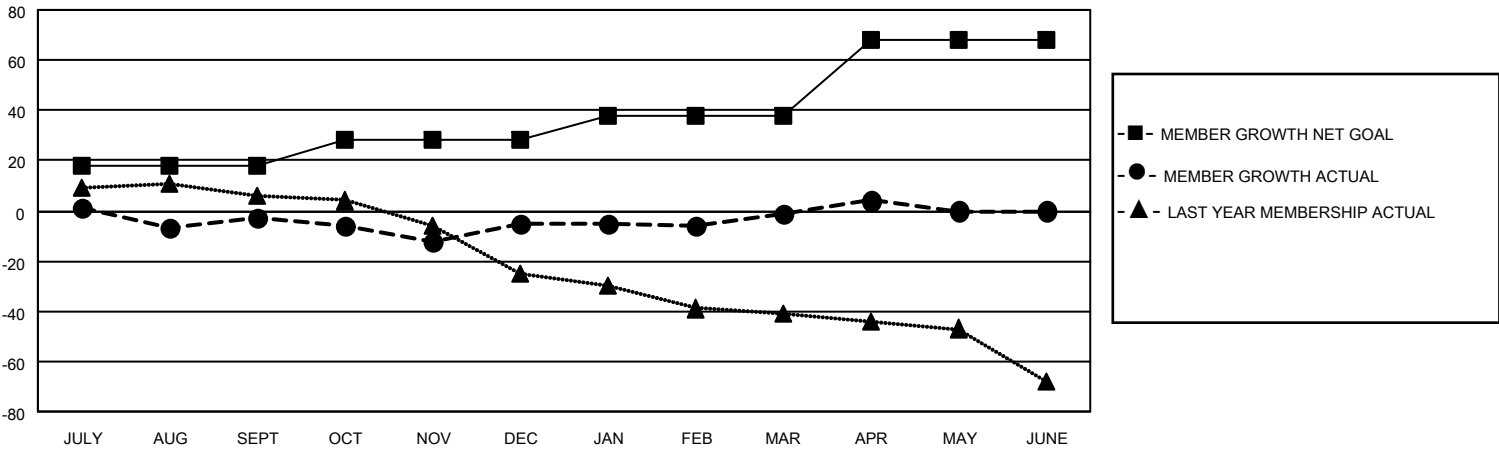
| Clubs                 |               |           |               |
|-----------------------|---------------|-----------|---------------|
| RESULTS FOR 2022-2023 |               |           |               |
| QUARTER               | NEW CLUB GOAL | NEW CLUBS | DROPPED CLUBS |
| JULY/AUG/SEPT         | 0             | 0         | 0             |
| OCT/NOV/DEC           | 0             | 0         | 0             |
| JAN/FEB/MAR           | 1             | 0         | 0             |
| APR/MAY/JUNE          | 0             | 0         | 0             |

| Members               |                        |                      |  |
|-----------------------|------------------------|----------------------|--|
| RESULTS FOR 2022-2023 |                        |                      |  |
| QUARTER               | MEMBER GROWTH NET GOAL | MEMBER GROWTH ACTUAL | DROPPED MEMBERS ACTUAL (including transfers) |
| JULY/AUG/SEPT         | 18                     | 15                   | 16   |
| OCT/NOV/DEC           | 10                     | 30                   | 30   |
| JAN/FEB/MAR           | 10                     | 17                   | 13   |
| APR/MAY/JUNE          | 30                     | 9                    | 4  |

**GOALS AND ACTUAL NEW CLUBS CUMULATIVE**



**GOALS AND ACTUAL MEMBERS CUMULATIVE**



|                        |           |
|------------------------|-----------|
| DROPPED CLUBS: 0       |           |
| <b>DROPPED MEMBERS</b> |           |
| DECEASED               | 19        |
| CLUB CANCELLED         | 0         |
| OTHER                  | 44        |
| <b>TOTAL</b>           | <b>63</b> |

31 CLUBS OF 55 ADDED 1 OR MORE NEW MEMBERS

[CLICK HERE FOR CUMULATIVE MEMBERSHIP DATA](#)

| <u>GENDER DISTRIBUTION</u>      |              |
|---------------------------------|--------------|
| MALE                            | 724 (67.35%) |
| FEMALE                          | 350 (32.56%) |
| NON BINARY                      | 0 (0.00%)    |
| PREFER NOT TO ANSWER            | 1 (0.09%)    |
| TOTAL FAMILY UNIT MEMBERS       |              |
|                                 | 136          |
| FAMILY MEMBERS PAYING HALF DUES |              |
|                                 | 68           |